

Arkansas APCD Data Users Group

Version 1.0.2020



January 2020

ADMINISTERED BY  **ACHI**

Agenda

- Introductions (5 minutes)
- Existing Projects and Data Use (10 minutes)
- Tips and Tools – Tip Sheet and Data Dictionaries (10 minutes)
- Questions from the Floor (30 minutes)
- What's next for the Arkansas APCD (5 minutes)
- Call to Action

Arkansas APCD Team

- Kenley Money, Director of Information Systems Architecture, ACHI
- Don Poe, APCD Technical Director, ACHI
- Kathy Hart, APCD Project Manager, ACHI
- Gini Ingram, APCD Sr. Technical Business Analyst, ACHI
- Trang Giang, APCD Technical Business Analyst, ACHI

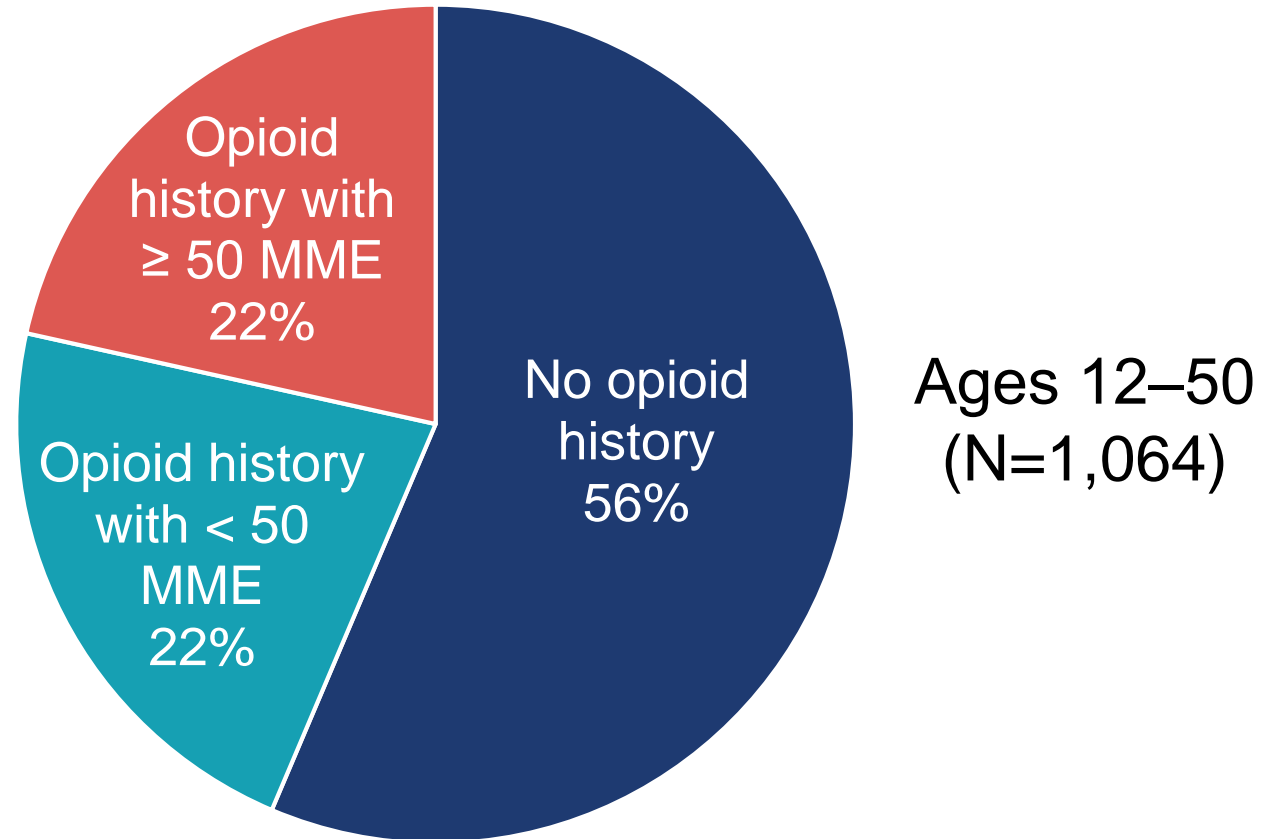
Arkansas Rural Health Partnership Opioid Response Consortium



Opioid Response: Death Certificate Review

- Arkansas has one of the highest rates of opioid prescribing, yet reported drug overdose deaths are lower than national average
- Hypothesis: Opioid-related deaths are inconsistently identified on death certificates
- Analyses of 2017 death certificate data includes:
 - Causes of death (for ages 12–50)
 - History of opioid prescriptions
 - Coroner-level profile

Deaths From Examined Causes* by Opioid Use History, 2017



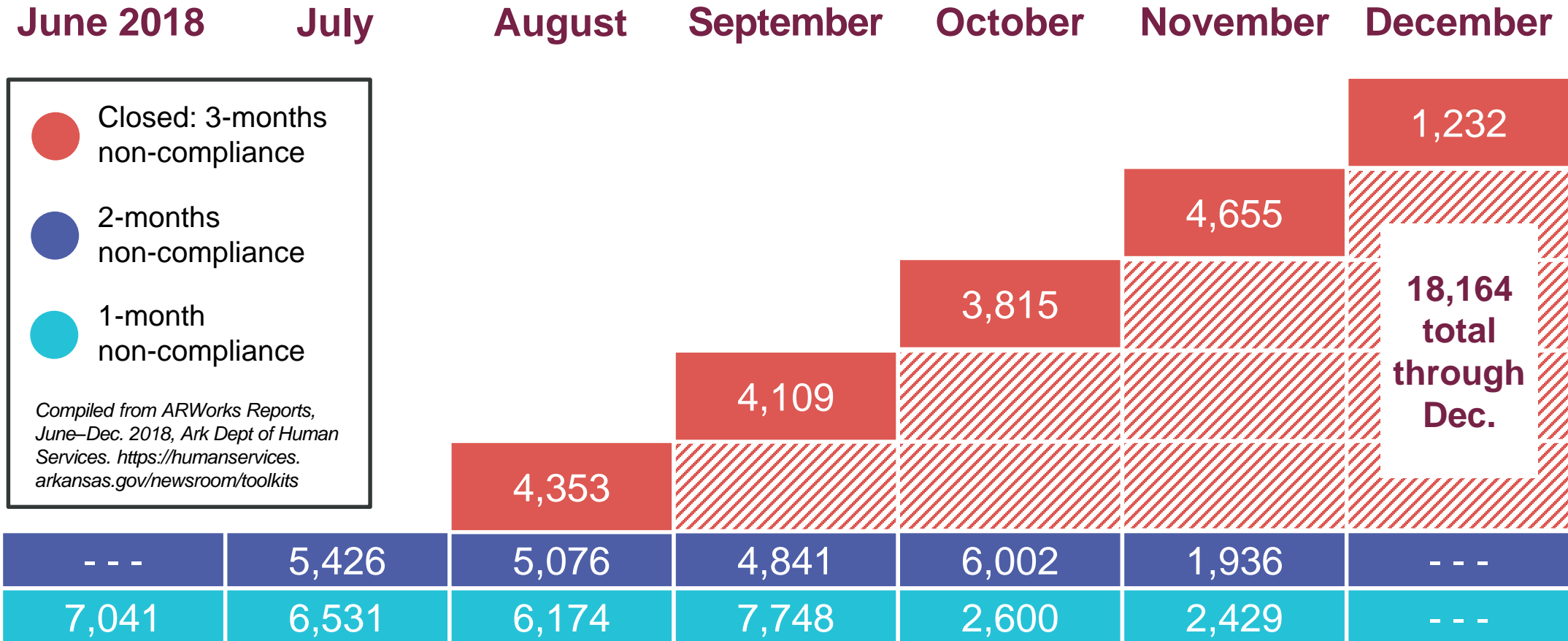
*Does not include causes of deaths by cancer, trauma, or known drug-related deaths (including opioids)

Top 5 Examined Causes* of Death Among Ages 12–50 with Opioid Use History

Primary Cause of Death	Number (2017)
Acute myocardial infarction, unspecified	70
Diabetes mellitus without complications, unspecified	25
Ill-defined and unknown cause of mortality	21
Alcoholic cirrhosis of liver	18
Hypertensive heart disease without heart failure	14

*Does not include causes of deaths by cancer, trauma, or known drug-related deaths (including opioids)

Enrollees Not Meeting Work Requirement in 2018 (Per Reporting Period)

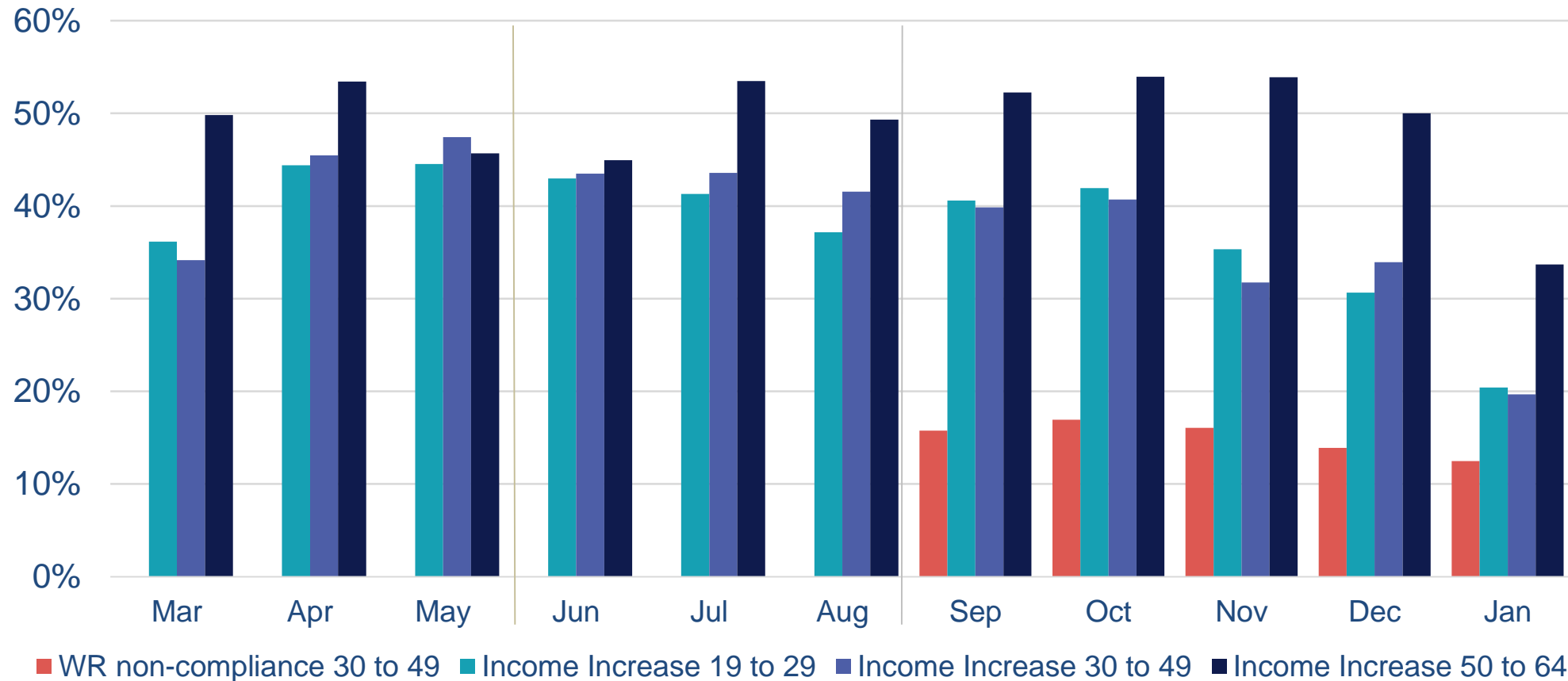


● Closed: 3-months non-compliance
● 2-months non-compliance
● 1-month non-compliance

Compiled from ARWorks Reports, June–Dec. 2018, Ark Dept of Human Services. <https://humanservices.arkansas.gov/newsroom/toolkits>

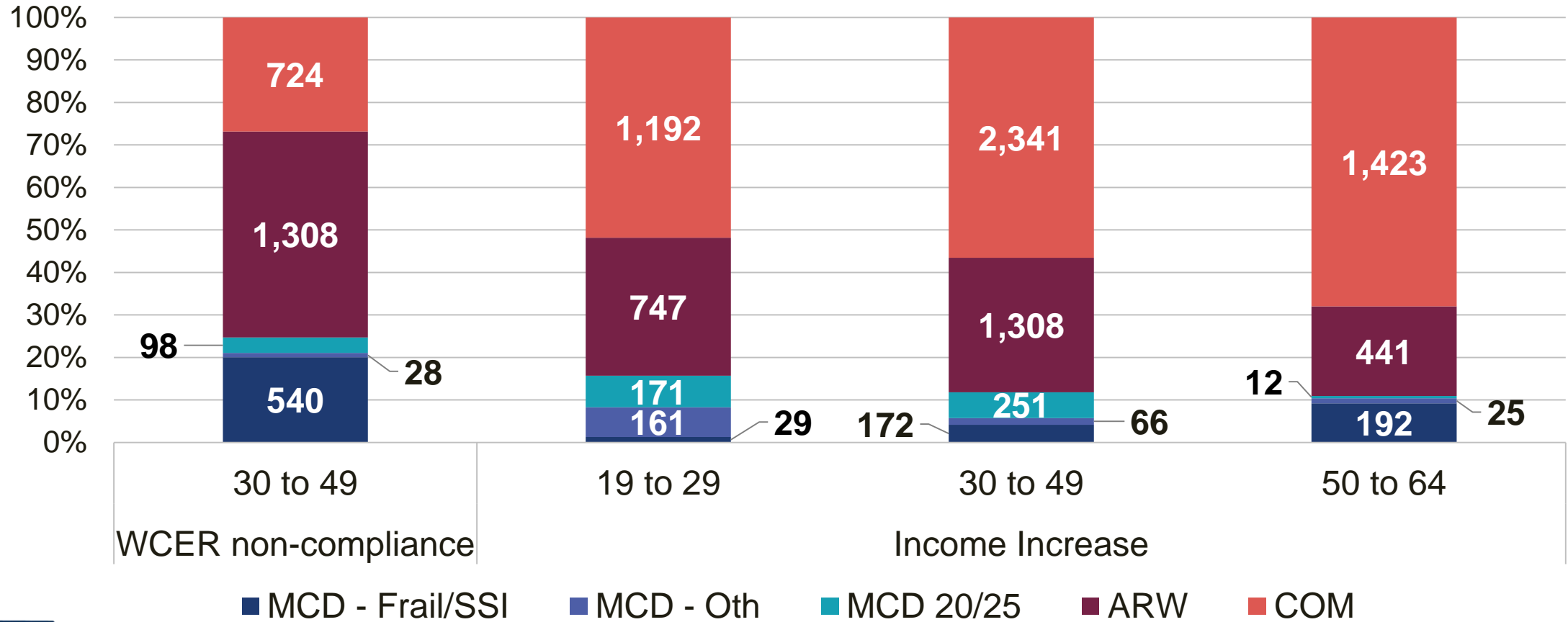
Coverage Uptake for Those Disenrolled Due to Income Increase or WCER Non-Compliance

By Age Group: March 2018 – January 2019



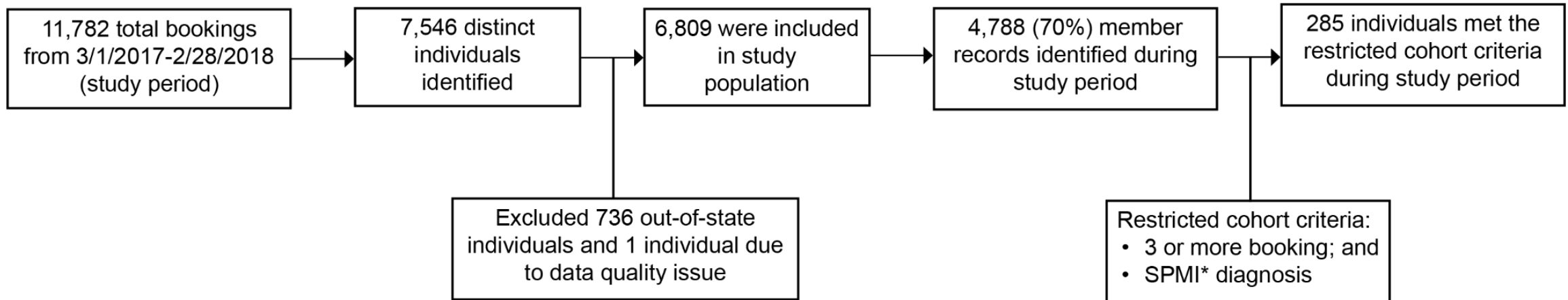
Coverage Type of Those Disenrolled for Income Increase or WCER Non-Compliance

By Age Group: March 2018 – January 2019 (as of March 2019)



Sebastian Co. Jail Detainees Found in APCD

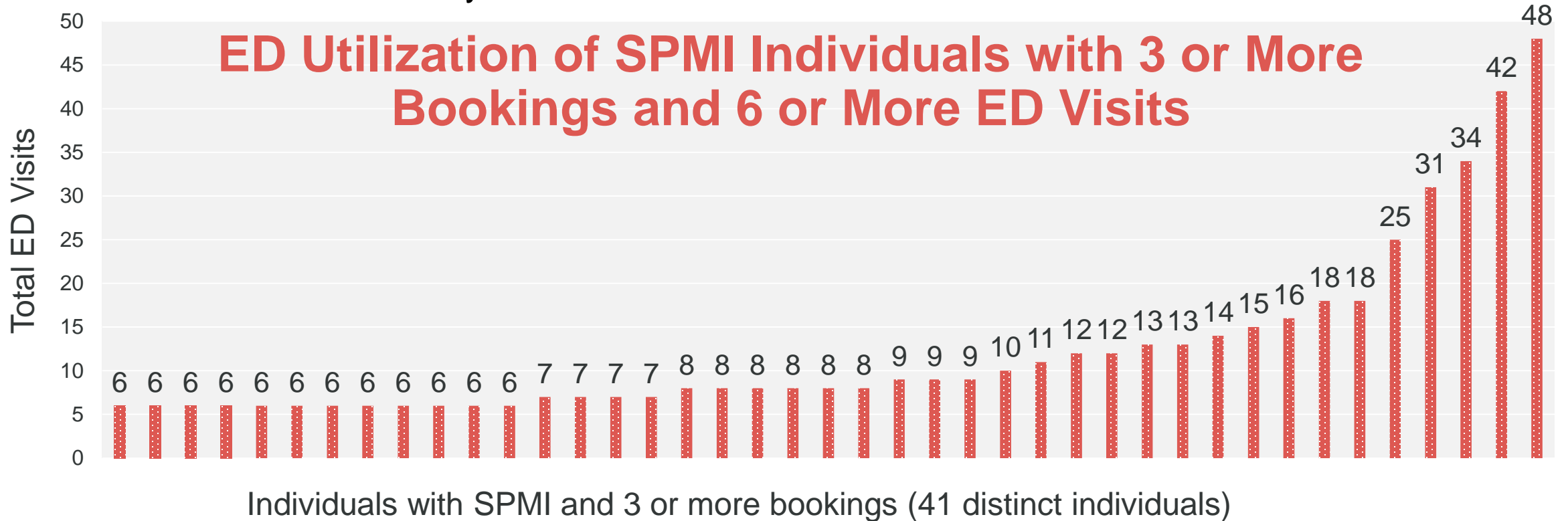
- Study Period: March 1, 2017 – February 28, 2018
- Based on claims between January 1, 2015 and December 31, 2018



*SPMI = Severe and persistent mental illness

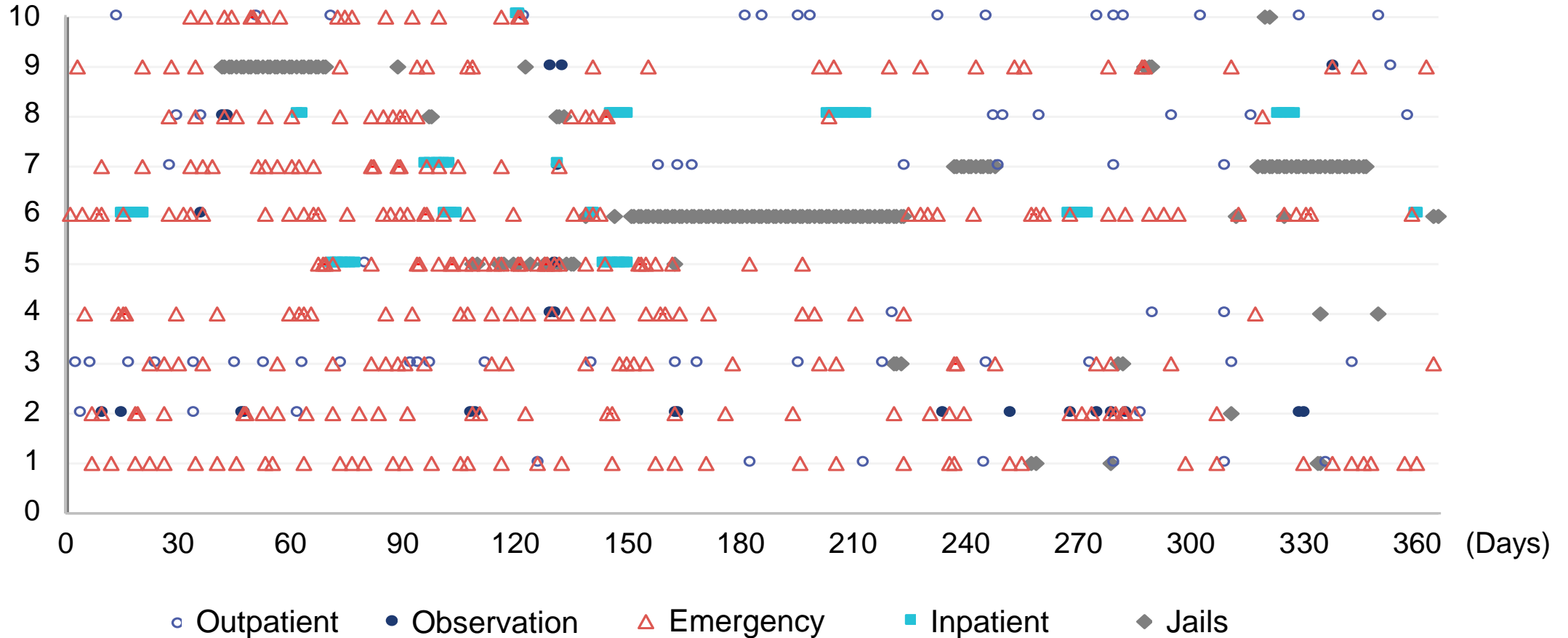
Six or More ED Visits

March 2017 – February 2018



High ED Utilizers, Case Series Profile

March 2017 – February 2018



Other Data Use Examples

We want to hear from you.

Tips and Tools: Data Requester Tip Sheet



Arkansas All-Payer Claims Database



The Tip Sheet now uses a dynamic and searchable engine!

Home Reports & Maps Resources Governance Web Portal About the APCD Search this website Search

Welcome to the Arkansas All-Payer Claims Database (APCD)

There is a growing demand and need for transparency of healthcare information in Arkansas to promote high-value care and advance research. Consumers, employers, and policymakers are advocating for greater reporting on the prices of healthcare services as a way to encourage consumers to choose low-cost, high-quality providers and to promote competition based on value. The [Arkansas All-Payer Claims Database \(APCD\)](#) is a dynamic tool that will enable the state to further its transparency objectives by collecting healthcare data from public and private sources and empowering Arkansans with information to better understand how and where healthcare is being delivered and how much is being spent. Please see the "How to Use the APCD Website" box below to learn how to navigate the Arkansas APCD website.

What's New?

Arkansas APCD Announcements

Online Data Dictionaries Replaces .pdf format (NEW! 1/3/2020)
The Arkansas APCD now provides online data dictionaries with improved searching capabilities. The new data dictionary format is printable, too. They can be found at the same link: <https://www.arkansasapcd.net/Resources/DataDictionaries/>. The .pdf versions are still available upon request.

New Member Data Versioning Methodology
The [Arkansas APCD Version Rank Methodology](#) document helps the data requester identify the most recent version of an enrollment data. This is applicable only if data requester receives all member records. Best practice provides only the most recent record.

New Arkansas APCD Data Available
Visit <https://achi.net/newsroom/arkansas-healthcare-transparency-initiatives-expands/> for the latest information about new data available on the Arkansas

Data Requester Resources

The Arkansas APCD team is proud to announce that the Data Release Request Process is now live. Please use the links below to access the Data Request Application forms and to see a list of approved applications.

- [Data Request Process & Documents](#)
- [Data Release Request Status](#)
- [Arkansas APCD Data Request Pricing](#)
- [Arkansas APCD Data Use Resources](#)
- [Arkansas APCD Data Dictionaries](#)

Read our latest blog post for updates on data availability and other news. (NEW 7/22/19)

- [Arkansas APCD blog](#)

Data Requester Tip Sheet

Data Requester Resources

The Arkansas APCD team is proud to announce that the Data Release Request Process is now live. Please use the links below to access the Data Request Application forms and to see a list of approved applications.

- [Data Request Process & Documents](#)
- [Data Release Request Status](#)
- [Arkansas APCD Data Request Pricing](#)
- [Arkansas APCD Data Use Resources](#)
- [Arkansas APCD Data Dictionaries](#)

Read our latest blog post for updates on data availability and other news. (NEW 7/22/19)

- [Arkansas APCD blog](#)

Data Requester Tip Sheet **New Format! Updated January 3, 2020**



<https://www.arkansasapcd.net/Home/>

Tips and Tools: Data Requester Tip Sheet

Data Requester Tip Sheet



Arkansas Healthcare Transparency Initiative

APCD Data Requester Tips & Issues

The following tables contains information about data quality or data nuances that affect data in the Arkansas APCD. This information is provided at the Submitting Entity (SE) level where applicable, otherwise, the issue described affects all SEs. Data requesters should review and consider each of these as they move forward with their stated use of the data.

Data Issues entries will be resolved, where possible, and the correction will be available in future Arkansas APCD releases. Resolution is being actively pursued for items in this section.

Data Tips entries cannot or will not be addressed. Actions to work around or nullify the issue are provided where possible.

Resolved Issues entries are issues where resolution has been achieved. The Update Date will indicate when the correction was made available in the Arkansas APCD release. If your data set receipt date is older than the update date, you may still experience the issue in your data set.

Create New Data Issue

Create New Tip

Enter Keyword here to search



Please Note

When using the Arkansas APCD, you may encounter issues which are not documented on the Tip Sheet. Please advise the Arkansas APCD Support Team of any concerns or issues here: adrs@achiapcd.atlassian.net. The Support Team will respond to your questions and work to resolve any issues.

Data Issues

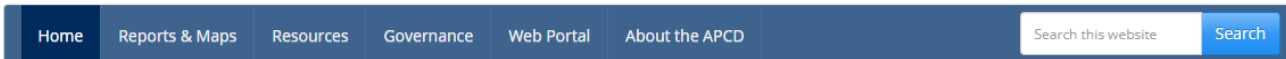
Title	Active/Resolved	Submitting Entity (SE)	Description	Resolution	Update Date
Issue: Pharmacy Claim Versioning for 79413B & 95446	Active	79413B and 95446	Pharmacy claim versioning	Because the pharmacy claim numbers (PC004) are suffixed with the characters P or X, the prescribed claim versioning rules for these SEs did not work correctly. These issues are being addressed with an anticipated resolution by June 2020. To use these data, the following workaround is recommended: Remove the P or X from the last character of the value in PC004. Group claims by PC004, PC005 and select the claim line with the latest paid date (PC017) and where PC110 = O that does not have a corresponding claim line based on claim number where PC110 = B.	1/3/2020



Tips and Tools: APCD Data Dictionaries



The APCD Data Dictionaries have also moved to a dynamic and searchable engine!



Welcome to the Arkansas All-Payer Claims Database (APCD)

There is a growing demand and need for transparency of healthcare information in Arkansas to promote high-value care and advance research. Consumers, employers, and policymakers are advocating for greater reporting on the prices of healthcare services as a way to encourage consumers to choose low-cost, high-quality providers and to promote competition based on value. The [Arkansas All-Payer Claims Database \(APCD\)](#) is a dynamic tool that will enable the state to further its transparency objectives by collecting healthcare data from public and private sources and empowering Arkansans with information to better understand how and where healthcare is being delivered and how much is being spent. Please see the "How to Use the APCD Website" box below to learn how to navigate the Arkansas APCD website.

What's New?

Arkansas APCD Announcements

Online Data Dictionaries Replaces .pdf format (NEW! 1/3/2020)
The Arkansas APCD now provides online data dictionaries with improved searching capabilities. The new data dictionary format is printable, too. They can be found at the same link: <https://www.arkansasapcd.net/Resources/DataDictionaries/>. The .pdf versions are still available upon request.

New Member Data Versioning Methodology
The [Arkansas APCD Version Rank Methodology](#) document helps the data requester identify the most recent version of an enrollment data. This is applicable only if data requester receives all member records. Best practice provides only the most recent record.

New Arkansas APCD Data Available
Visit <https://achi.net/newsroom/arkansas-healthcare-transparency-initiatives-expands/> for the latest information about new data available on the Arkansas

Data Requester Resources

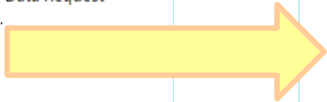
The Arkansas APCD team is proud to announce that the Data Release Request Process is now live. Please use the links below to access the Data Request Application forms and to see a list of approved applications.

- [Data Request Process & Documents](#)
- [Data Release Request Status](#)
- [Arkansas APCD Data Request Pricing](#)
- [Arkansas APCD Data Use Resources](#)
- [Arkansas APCD Data Dictionaries](#)

Read our latest blog post for updates on data availability and other news. (NEW 7/22/19)

- [Arkansas APCD blog](#)

[Data Requester Tip Sheet](#) **New Format! Updated January 3, 2020**



Data Requester Resources

The Arkansas APCD team is proud to announce that the Data Release Request Process is now live. Please use the links below to access the Data Request Application forms and to see a list of approved applications.

- [Data Request Process & Documents](#)
- [Data Release Request Status](#)
- [Arkansas APCD Data Request Pricing](#)
- [Arkansas APCD Data Use Resources](#)
- [Arkansas APCD Data Dictionaries](#)

Read our latest blog post for updates on data availability and other news. (NEW 7/22/19)

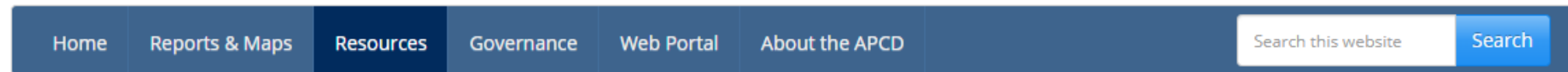
- [Arkansas APCD blog](#)

[Data Requester Tip Sheet](#) **New Format! Updated January 3, 2020**

<https://www.arkansasapcd.net/Home/>



Tips and Tools: APCD Data Dictionaries



[Home](#) / [Resources](#) / [Data Dictionaries](#)

Arkansas APCD Data Request Data Dictionaries

Data field definitions supporting Arkansas All Payer Claims Database (APCD) data requests are provided in three data dictionaries.

1. [Arkansas APCD Data Dictionary: Claims Based Data Dictionary](#) ★★
2. [Arkansas APCD Data Dictionary: Non-Claims Based Data Dictionary](#) ★
3. [Arkansas Medicare Data Dictionary Element List](#)

Data requesters should reference these documents to better understand the data elements they want to request. These documents can be used with the [2018 Data Attribute Supplement for Data Requesters](#) when selecting data elements for a data request.

These data dictionaries have corresponding [data element lists](#) for data requesters' use when selecting data elements for a data request.

The Arkansas APCD also provides [downloadable reference tables](#), supporting the data dictionaries listed above.



Tips and Tools: APCD Data Dictionaries

APCD Data Dictionary: Claims-Based Data



Arkansas Healthcare Transparency Initiative
APCD Data Dictionary: Claims-Based Data
Commercial Carriers and Arkansas Medicaid
August 2018
Version 6.0.2018.2

Page Tree

[Expand all](#) [Collapse all](#)

- [Glossary of Terms](#)
- [Other Supporting Documents](#)
- › [APCD Layouts and Definitions](#)
- › [Appendices](#)

Overview

Access to timely, accurate, and relevant data is essential to improving quality, mitigating costs, and promoting transparency and efficiency in the healthcare delivery system. Pursuant to the Arkansas Healthcare Transparency Initiative of 2015,[1] the Arkansas Center for Health Improvement (ACHI), or the "Administrator," is hosting a comprehensive all-payer claims database (APCD) on behalf of the Arkansas Insurance Department (AID) that houses member enrollment data, medical claims, pharmacy claims, dental claims, and provider data. As noted in AID Rule 100 (the "Rule"), the Arkansas Healthcare Transparency Initiative — Arkansas APCD Data Submission Guide (DSG) establishes file requirements from which submitting entities develop data files for voluntary or mandatory data submission.

Arkansas APCD Data Dictionary

Introduction

This document, the Arkansas APCD Data Dictionary, provides data element definitions, data types, formats, and other information about fields available to the data requester. It is developed from the Arkansas APCD DSG and also contains additional or replacement fields for analytic use.

This data dictionary contains every field available for selection by data requesters. Because fields for every data request may differ, this data dictionary may contain more data fields than those in the output dataset.

Data file layouts, data element descriptions, and other relevant data submission information for the data categories are provided in the [Arkansas APCD Data Layouts and Definitions](#) section. Each data element description includes the data element definition, associated values, value definitions, format, data type, coverage expectation, and required/optional indicators.

The dataset formats in the [Arkansas APCD Data Layouts and Definitions](#) section created by the APCD Administrator were developed in compliance with the Act and were identified after careful review of APCD layouts used in other states, APCD Council guidance, and the APCD Council's Core Set of Data Elements.[2] The Administrator selected formats and variables that (1) conform to the minimum standard APCD core layout provided by the APCD Council; (2) include the data elements required for health system analytics and consumer data reporting; and (3) facilitate healthcare data transparency in Arkansas.



Tips and Tools: Universe Counts

- Data Requester tool: APCD Universe Counts
 - <https://www.arkansasapcd.net/Docs/280/>
- Question/Discussion – what counts or information would you want to have to make better data selections for your data request?

Example

CCS	Description	Primary Diagnosis	Primary Procedure	Gender	Age Range*	Service Year	Count
226	Stress fracture, unspecified femur, sequela	M84353S	82550	F	0-18	2014	1
226	Stress fracture, unspecified femur, sequela	M84353S	82550	M	19-45	2014	9
226	Stress fracture, unspecified femur, sequela	M84353S	86060	M	19-45	2014	7
226	Stress fracture, unspecified femur, sequela	M84353S	86431	M	85+	2014	4
226	Stress fracture, unspecified femur, sequela	M84353S	87086	F	46-64	2014	1
226	Stress fracture, unspecified femur, sequela	M84353S	87086	M	46-64	2014	2
226	Stress fracture, unspecified femur, sequela	M84353S	87086	F	65-84	2014	3

Questions from the Floor

We want to hear from you.

What's Next for the APCD?

- Member versioning, new field: VersionRank
 - ID most current record per member per carrier's plan/enrollment
 - Used when calculating member months and enrollment spans
 - More information: <https://www.arkansasapcd.net/Docs/1375/>

What's Next for the APCD?

- Field Discussion: ME018, ME019, & ME020
 - Set by submitters; indicates if member's plan includes medical, pharmacy, or dental
 - Flags are set inconsistently by submitters
 - Three additional flags have been added that indicate if claim was active within a plan's enrollment period
 - These flags can change with each update

What's Next for the APCD?

- Three additional flags continued...
 - ME018A, Medical Claim Match Flag: values “Y” or null
 - “Y” indicates that member record matches an existing medical claims record in the APCD if date of service is within member enrollment and disenrollment dates
 - ME019A, Pharmacy Claim Match Flag: values “Y” or null
 - “Y” indicates that member record matches an existing pharmacy claims record in the APCD if fill date is within member enrollment and disenrollment dates
 - ME020A, Dental Claim Match Flag: values “Y” or null
 - “Y” indicates that member record matches an existing dental claims record in the APCD if date of service is within member enrollment and disenrollment dates

What's Next for the APCD?

Complete and ready for data requests!

Quarterly Build Schedule – Data Availability and Coverage

Data Type	Current	Jan. 2020	April 2020	July 2020
Fully Insured Commercial Data	June 30, 2018	June 30, 2019	September 30, 2019	Dec. 31, 2019
ADH Birth/Death Data	Dec. 31, 2017	Dec. 31, 2018	Dec. 31, 2018	Dec. 31, 2018
ADH Hospital Discharge (for uninsured)	Dec. 31, 2017	Dec. 31, 2018	Dec. 31, 2018	Dec. 31, 2018
ADH Emergency Dept. (for uninsured)	Dec. 31, 2016	Dec. 31, 2017	Dec. 31, 2018	Dec. 31, 2018
Cancer Registry	Dec. 31, 2015	Dec. 31, 2016	Dec. 31, 2016	Dec. 31, 2016
Arkansas Medicaid	June 30, 2018	June 30, 2019	Dec. 30, 2019	Dec. 31, 2019
Arkansas Medicare	Dec. 31, 2016	Dec. 31, 2017	Dec. 31, 2017	Dec. 31, 2017

APCD Technical Support

- Reach out to adrs@achiapcd.atlassian.net for questions about data requests, data use, or pricing

Call to Action

- Sign up for the ACHI newsletter
- Follow ACHI and the Arkansas APCD on social media
 - Facebook
 - Twitter
 - LinkedIn
 - Blog posts on ACHI website
- Take our survey!
- Next Users Group Meeting: April 28, 2020